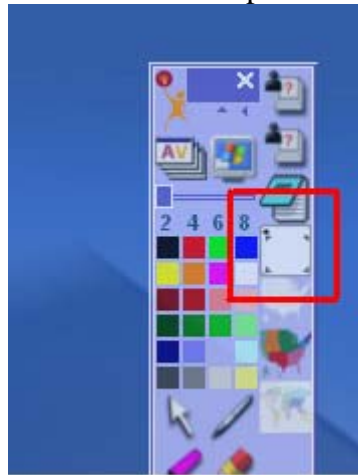
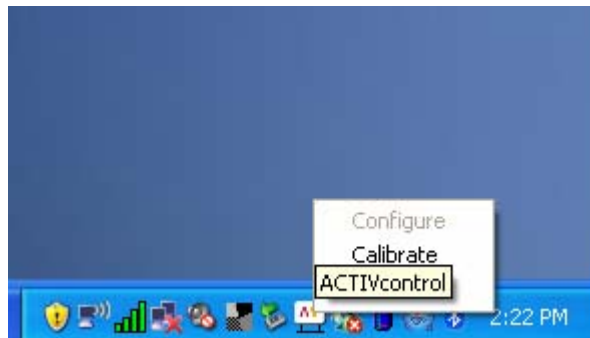


Calibration Techniques

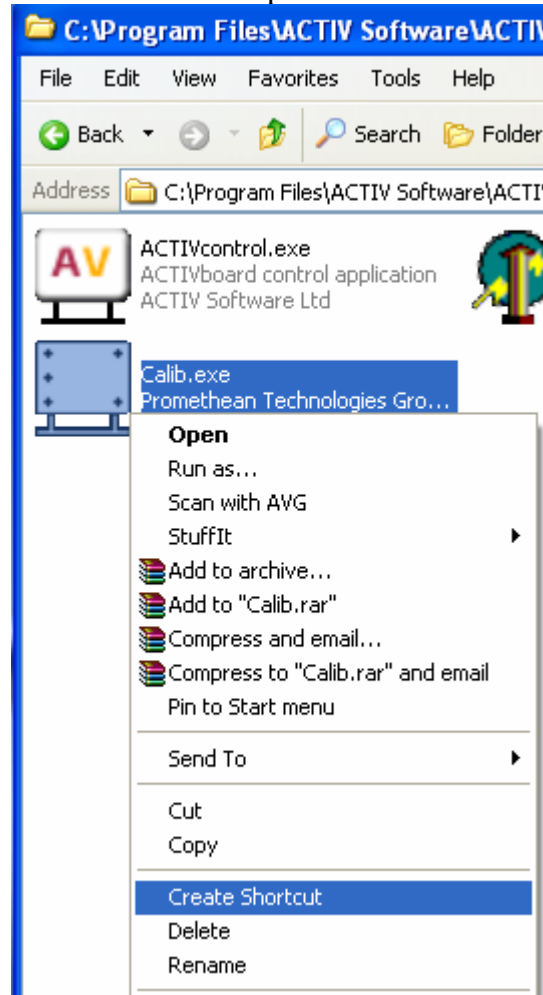
1. There are a number of ways to calibrate your Promethean ActivBoard.
2. The first way is by going into ActivStudio. On the main toolbar, there is an icon that you can click on to start the calibration process.



3. A second way to calibrate is by right-clicking on your ActivControl icon in the system tray.



4. A third way to calibrate is to create a shortcut on your desktop. To do so, go into your ActiveDriver folder utilizing My Computer. The default path is C:\Program Files\ACTIV Software\ACTIVdriver. Right click on the file named Calib and click on Create Shortcut. This will create an icon on your desktop that you can double click on to start the calibration process.



5. There is a fourth way to calibrate your board if you have a 78" ActivBoard. Position your Activpen above the lighted flame or globe in the upper left hand corner of the board. Do not let the pen touch the board. After a few seconds, you will hear a "beep" and the calibration process will begin.